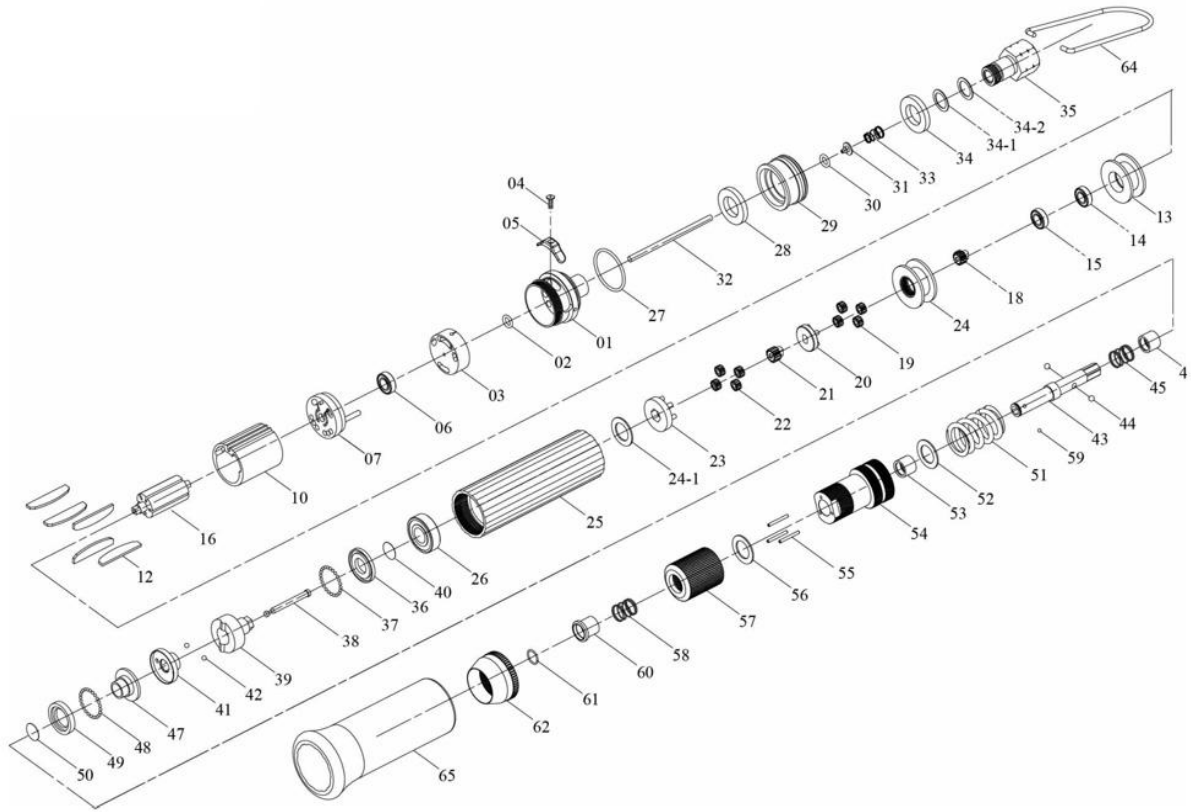


# OS-50PB **GAV** HAVALI SHUT-OFF TORNAVIDA



| ITEM NO. | DESCRIPTION           | Q'TY | ITEM NO. | DESCRIPTION       | Q'TY |
|----------|-----------------------|------|----------|-------------------|------|
| 1        | End Housing (Blue)    | 1    | 34-2     | Washer            | 1    |
| 2        | O Ring                | 1    | 35       | Air Inlet Bushing | 1    |
| 3        | Valve                 | 1    | 36       | Retainer          | 1    |
| 4        | Set Screw And Washer  | 1    | 37       | Ball              | 32   |
| 5        | Switch                | 1    | 38       | Pilot Pin         | 1    |
| 6        | Ball Bearing          | 1    | 39       | Rear Clutch       | 1    |
| 7        | End Plate             | 1    | 40       | C Ring            | 1    |
| 10       | Cylinder              | 1    | 41       | Center Clutch     | 1    |
| 12       | Blade                 | 5    | 42       | Ball              | 2    |
| 13       | Front Plate           | 1    | 43       | Anvil             | 1    |
| 14       | Ball Bearing          | 1    | 44       | Ball              | 2    |
| 15       | Ball Bearing          | 1    | 45       | Spring            | 1    |
| 16       | Rotor                 | 1    | 46       | Slide Base        | 1    |
| 18       | 18T Main Gear         | 1    | 47       | End Clutch        | 1    |
| 19       | 12T Plant Gear        | 4    | 48       | Ball              | 25   |
| 20       | Third Gear Cage       | 1    | 49       | Ball Race         | 1    |
| 21       | 18T Main Gear         | 1    | 50       | C Ring            | 1    |
| 22       | 12T Plant Gear        | 4    | 51       | Torque Spring     | 1    |
| 23       | Third Gear Cage       | 1    | 52       | Washer            | 1    |
| 24       | Internal Gear         | 1    | 53       | Anvil Bushing     | 1    |
| 24-1     | Washer                | 1    | 54       | Clutch Housing    | 1    |
| 25       | Center Housing (Blue) | 1    | 55       | Needle Pin        | 3    |
| 26       | Ball Bearing          | 1    | 56       | Regulation Washer | 1    |
| 27       | O Ring                | 1    | 57       | Torque Ring       | 1    |
| 28       | Silencer              | 1    | 58       | Spring            | 1    |
| 29       | Exhaust Deflector     | 1    | 59       | Ball              | 1    |
| 30       | O Ring                | 1    | 60       | Bit Slide Sleeve  | 1    |
| 31       | Valve Plate           | 1    | 61       | C Ring            | 1    |
| 32       | Operating Rod         | 1    | 62       | Rear Housing      | 1    |
| 33       | Cone Spring           | 1    | 64       | Suspension Ring   | 1    |
| 34       | Silencer              | 1    | 65       | Soft Cover        | 1    |
| 34-1     | O Ring                | 1    |          |                   |      |